

IFDA

INTERNATIONAL FURNISHINGS
AND DESIGN ASSOCIATION

NETWORK

CONNECTING YOU TO THE GOLD STANDARD

IN THIS ISSUE

- Revealing the Secret of Great Italian Art
- Chapter News
- IFDA'S Educational Foundation Announces Professional Grants For 2023



Elegant archway invites you to see what is beyond. Designs by Pavarini Design, Inc. Photograph © Marco Ricca Studios.

INTERNATIONAL INDUSTRY PARTNERS

DIAMOND



PLATINUM



GOLD



SILVER

S H E R R I L L

BOARD OF DIRECTORS

President

Dawn Brinson, FIFDA
dawn@tmm.agency

President-Elect

Larissa Cook
lcook@fbnconstruction.com

Immediate Past President

Ida J. McCausland
ijminteriordesign@gmail.com

Treasurer

Janet Stevenson, FIFDA
janets@diplomaclosetdesign.com

Immediate Past Treasurer

Dave Gilbert, FIFDA
dfgdave@comcast.net

Directors

Karen Fisher
karen.designdetails@gmail.com

Judith Clark Janofsky, FIFDA
judith@delements.com

Grace McNamara
grace@wf-vision.com

Stephanie Theofanos
stephanie@modtra.net

Sue Williams, FIFDA
sue@suewilliamsandcolleagues.com

Educational Foundation Chair

Karen Dzendolet
karen@kdzdesigns.com

IFDA HEADQUARTERS, IFDA.COM

Linda Kulla, FIFDA, Executive Director
linda@ifda.com
610-608-0008

COUNCIL OF PRESIDENTS

ARIZONA CHAPTER

Chris West, chris@2westdesign.com

CAROLINAS CHAPTER

Joyce Poynton, FIFDA, jmpoy702@gmail.com

ILLINOIS CHAPTER

Grace McNamara, grace@wf-vision.com

JAPAN CHAPTER

Haruki Senda, Ha-senda@hikosen-style.co.jp
Yasue Ishikawa, ishikawa@risabraire.com

NEW ENGLAND CHAPTER

Kyle Tripp, ktripp@simplehome.net

NEW YORK CHAPTER

David Santiago, santi@casasanti.com

PHILADELPHIA CHAPTER

Katy Lynn Retzbach, katyllyn@designsbykatyllyn.com

RICHMOND CHAPTER

Paul Lamborn, plamborn@techpainting.com

WASHINGTON D.C. CHAPTER

Ida McCausland, ijminteriordesign@gmail.com



A peek at the Arigato Tomodachi • Thank You Friends Farewell Party hosted by Cosentino, are L to R: Sumiko Tanaka, Tea Specialist; Shinobu Kishimoto, Plant Artist and Calligrapher; Nazlican (Naz) Cildar, one of the many executive hosts from Cosentino who also wore Kimono for the party; Akiko Kawahara, Architectural Restorations; Ayako Yoshimura, Risabnaire staff; and Risa Ishikawa, President, Risabnaire Design. Watch for more in a special issue of *NETWORK*!

THE INTERNATIONAL FURNISHINGS AND DESIGN ASSOCIATION MAGAZINE

Contents Spring 2023

CONTENTS

President's Message	1
IFDA Elects a New President for 2024	1
Where to Begin? Lighting Beyond Edison	2
Revealing the Secret of Great Italian Art	4

CHAPTER NEWS

Carolinas Chapter.....	6
Florida Chapter.....	7
New England Chapter	8
New York Chapter	10
Philadelphia Chapter	11
Richmond Chapter	13

RESOURCES

IFDA'S Educational Foundation Announces	
Professional Grants For 2023.....	15
IFDA Welcomes Our 135 New Members.....	17
IFDA Market Calendar of Upcoming Events	19

IFDA NETWORK © 2023 INTERNATIONAL FURNISHINGS AND DESIGN ASSOCIATION. ALL RIGHTS RESERVED.
Editorial material contained in this publication may not be reproduced without permission. Feature articles are the sole responsibility of their authors. Opinions expressed therein are not necessarily those of the IFDA.

President's Message



Hello Everyone,

What an exciting spring we have had here at IFDA, and so much more to look forward to in the coming months.

The April High Point Market was awash with IFDA events, members on panels and providing educational presentations, meetings with potential Industry Partners and collaborating with, well, collaborators.

ICFF, the International Contemporary Furnishings Fair in New York City played host to the latest iteration of IFDA Selects which was met with a huge reception. Additionally, our IFDA Japan Chapter in cooperation with IFDA NY and a committee of IFDA members from around the country presented an amazing Japan Fair. You'll read and hear more about that in our next issue of Network.

Our membership continues to grow every week thanks to all of you. Remember, we have some [new or revised membership categories](#) so spread the word to your friends, colleagues and vendors who might take advantage of:

- An expanded Associates' membership category, lowering the barrier to membership for young professionals and anyone just finishing their degree work, even those moving out of one career and into a design field
- A newly-created Educators' rate
- Corporate membership discounts
- International Industry Partnerships that provide membership in multiple chapters

Plan now to participate in the events below where we will gather and celebrate IFDA. You will receive notification and registration information from our International Headquarters regarding each:

- July Las Vegas Market Dutch Treat Dinner
- Diamond Gala in Boston in September
- October High Point Market

Happy Spring and remember #IFDARocks!

Dawn Brinson, IFDA

dawn@dwiconsults.com

IFDA Elects a New President for 2024

Submitted by Michelle Southworth

For the past 15+ years, Larissa Cook has been upholding high standards of excellence in the design and building industry. Under her collaborations and guidance, FBN doubled in size and grew into the award-winning company it is today. In 2021, she was honored as one of *Boston Magazine's* Faces of Women in Design.

After studying Criminal Justice at University of Massachusetts, Amherst, Larissa joined FBN as an assistant to the former owner John DeShazo. Despite having no prior experience in construction, Larissa worked tirelessly in a diverse range of roles—from Estimator to Bookkeeper to General Manager—and rose to her current position of President. Thanks to her discipline, persistence, and work ethic, Larissa quickly won the respect of her peers and mastered the art of winning the client's trust.

She has served as the New England Chapter President of the International Furnishings & Design Association (IFDA). During her



tenure, she grew chapter membership to make them the largest chapter internationally. She has won both the Executive Officer Appreciation Award and the Rising Star Award from the Builders and Remodelers Association of Greater Boston (BRAGB). Larissa has also been featured in *BDG's Magazine*, *Prelude*, and the *Boston Common Magazine* for her exceptional work.

Larissa enjoys bringing fascinating projects to life and working alongside the talented, hard-working individuals at FBN. She believes that having an "FBN Soul" means always doing the right thing and prioritizing the client's best interests, and that success is built upon hard work, determination, and consistency. Her favorite part of the job is cultivating relationships with FBN staff, industry partners, and clients. Outside of working hours,

Larissa loves horseback riding, traveling, and chasing new experiences. She is also passionate about animal rights, alleviating homelessness, and supporting disabled veterans.

Where to Begin? LIGHTING BEYOND EDISON

Brilliant Residential Lighting Techniques in the Age of LEDs

Submitted by Maureen Klein

What a pleasure it has been to review *Lighting Beyond Edison* by Charles Pavarini III with Mervyn Kaufman, FIFDA and J. Randall Tarasuk. Each chapter of this well-thought-out reference manual stands on its own. You can read it sequentially, or, focus on a particular room or setting where you might want some fresh ideas. Whether you're planning a new deck, updating a bedroom, or simply need an intro or refresher on LED's, the table of contents will point you in the right direction.

This award-winning designer known for his memorable use of illumination in many of the Kips Bay Show Houses and other prestigious events, shares a wealth of information and beautiful photography throughout. There are also graphs, diagrams and charts that help illustrate some of the technical aspects of lighting, for example, fixture placement.

His insider tips come from his research and first-hand experiences with the products and clients. For example read his suggestions for ongoing maintenance of outdoor fixtures. Have you ever tried to un-screw an outdoor spotlight from its base? Who knew that by lubricating lamp bases and sockets with a special silicone when you install, you can prevent that corrosive-causing struggle later on. With a background also in theatre and set design, Pavarini gives relatable examples, comparing how the designer is like a stage director who with the help of lighting can lead the "audience" to focus on what is important to see and experience.

You'll also read about some of the fascinating ways LEDs and lighting can be controlled and customized and what we might find (or dream about) in the future. Perhaps, the author muses, someday we may no longer need lighting fixtures, the architecture will actually light the room. Or maybe it will be possible to harness phosphorescence down the road, reminding me of the way we loved to swim at night and see the "jelly fish" lighten each stroke we took.

LED's have come a long way since their accidental discovery in 1961. The author reminds us of the last time a big change was made in lighting, going from fire and candles to the advent of electricity, and... people adjusted. The evolution of lighting to LEDs has been met with some resistance, but with more education, better products, and lower prices, it is becoming a more accepted and specified way of lighting the home, inside and out.

Because things are changing at such a fast clip, the author wisely included in the book QR codes. A click of your phone or tablet camera, will bring you to the most current information from leading manufacturers and other lighting resources.

Pavarini's goal was to provide a reliable reference, a manual that one could turn to for guidance on how to light any room in your home, and that he did, with glowing results!



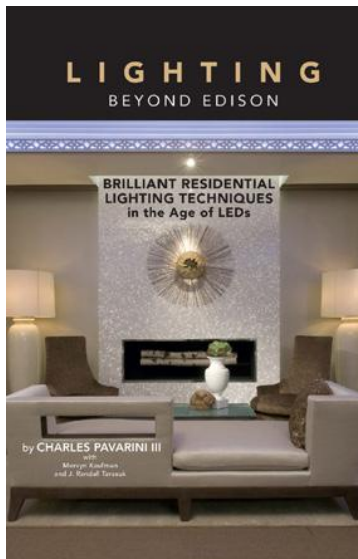
LED color variation shown in degrees of kelvin (K) from warm to cool.



IFDA CONNECTS

Last year IFDA came out with a new promotional logo: IFDA Connects. Here's a perfect example of how. Years ago, Merv Kaufman, FIFDA, a former editor for *House Beautiful*, was impressed with the speaker at the podium who had so much lighting knowledge. After the talk, he approached this speaker and basically said - You know, you should write a book about this. There is a real need out there. Charles responded, I have no idea how to write, it's not my thing. But soon the two were collaborating with the help of J. Randall Tarasuk, vice president of Pavarini Design and Rose Hittmeyer another IFDA member who free-lanced with the firm. They all connected through IFDA with love and admiration of each-others talents, using the best skills of each to produce a very brilliant end result. *Lighting Beyond Edison*.

If you have a story about how IFDA Connects that you have experienced, we'd love to hear about it and share your story in upcoming *Network* issues. Email Linda Kulla at linda@ifda.com.



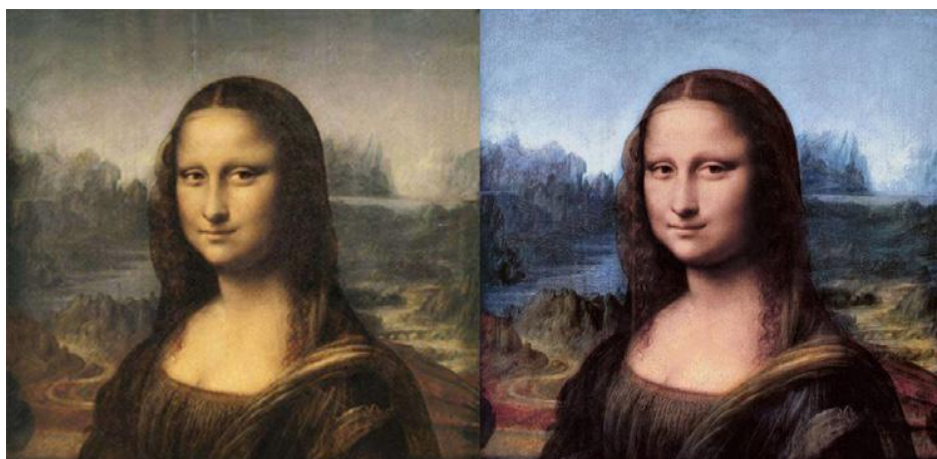
Lighting by Edison by Charles Pavarini III
with Mervyn Kaufman, FIFDA and J. Randall Tarasuk



Layers of light in formal living room. Designs by Pavarini Design, Inc.
Photograph: © Marco Ricca Studios



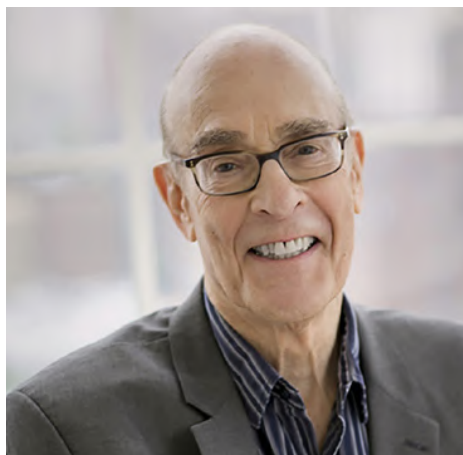
Ceiling detail where pierced crown molding hides LED
strip lights to allow subtle lighting of ceiling. Designs by
Pavarini Design, Inc. Photograph: © Marco Ricca Studios



Mona Lisa, lit with properly balanced LEDs reveals the true colors, on the right.
Photograph: J. Randall Tarasuk



Charles Pavarini III



Mervyn Kaufman, FIFDA



J. Randall Tarasuk

Revealing the Secret of Great Italian Art

Submitted Mark Rosenhaus, IFDA NY - Rosenhaus Design Group

It's no secret that the Italians have always been at the forefront of beautiful art. But what exactly *is* their secret?

Hoping to find an answer, I went to Italy last summer, spending two months searching out and photographing art and architecture from as far back as the Etruscans. My goal: to understand why something isn't or is beautiful to the viewer and the artisan.

Invited to take part in a program in the ancient hill town of Civita, Bagnoregio, in conjunction with the World Monuments Fund, I explored a waning community that is eroding to the point where houses are falling off the edge and exposing caves where olives were once ground into oil and white grapes were crushed into wine. Personally experiencing the effect of wind, rain, higher temperatures, and what may have been an earthquake made me very aware of the importance of preservation.

My adventure also confirmed why Italian art is timeless, whether it's 700 years old or modern: the artists adhere to the tenets of the Golden Ratio based on the Fibonacci Sequence: 1, 1, 2, 3, 5, 8, 13, 21, etc. in which two consecutive numbers equal the third. Similarly, dividing adjacent numbers produces 62%. This is the geometry of nature, the DNA of Nature, if you will. Our own DNA double helix is built within this same 62% ratio that guides our appreciation of beauty from centuries ago until today. It's what fully engages our attention; it's what makes a work of art world-famous.

This proportion can be found in measuring your finger's three digits, counting the spiral of sunflower seeds, hearing a sweet violin, being awed by the rings of Saturn, marveling at the grandeur of the duomo in Florence, and many others, seen from microscopic to telescopic. The Golden Ratio also works closer to home: I apply it to my interior design work, including kitchen cabinets reflecting the 62% golden rectangle.

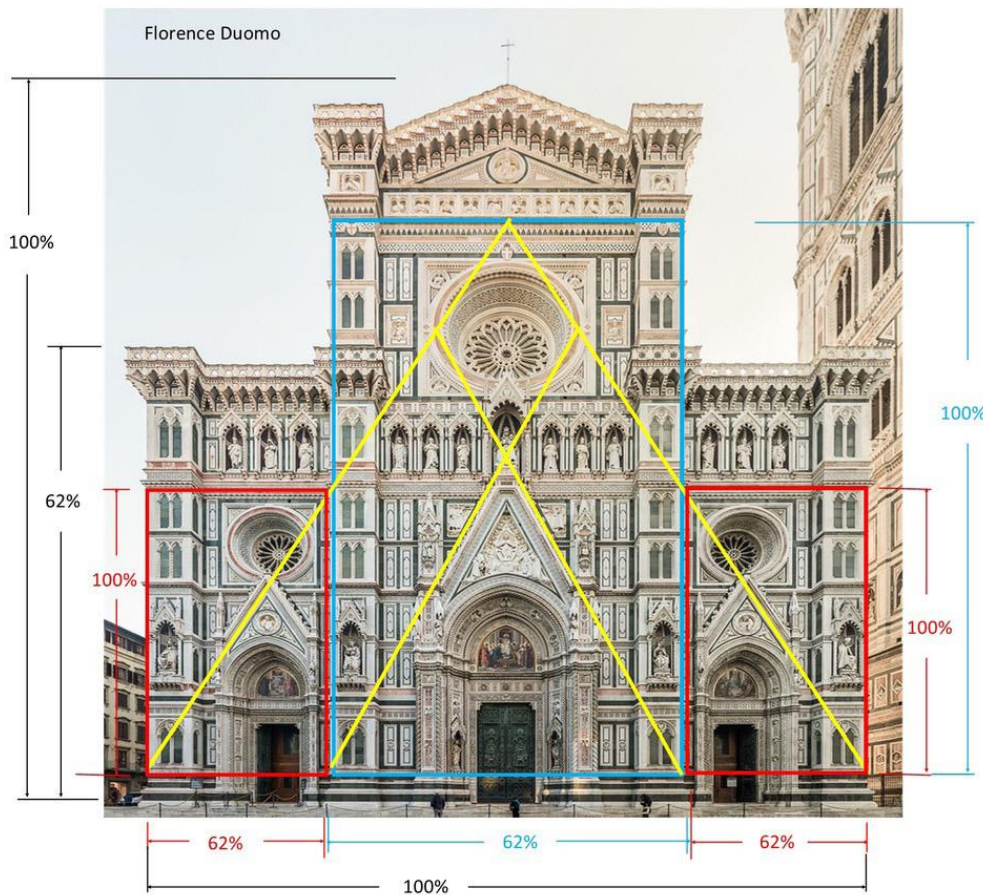
My second month abroad took me to Rome, Florence, and Milan, photographing cathedrals, monuments and inside famous museums; crossing the canals of Venice; going up the Carrara marble mountain, and negotiating scenic, winding, roadside towns...all in search of the extraordinary Sacred Geometry.

I have folded what I saw and learned into the presentation I shared with IFDA NY at the new Artemest gallery in early March. "Italian Artistry • Golden Ratio • American Design" explores the creative mindsets of Italian and international artists, seeking to elucidate their thinking and documenting their influence on design. You can see it in masterpieces of painting, sculpture, architecture, furniture, everyday items, and, yes, also in the arrangement of kitchen cabinetry.

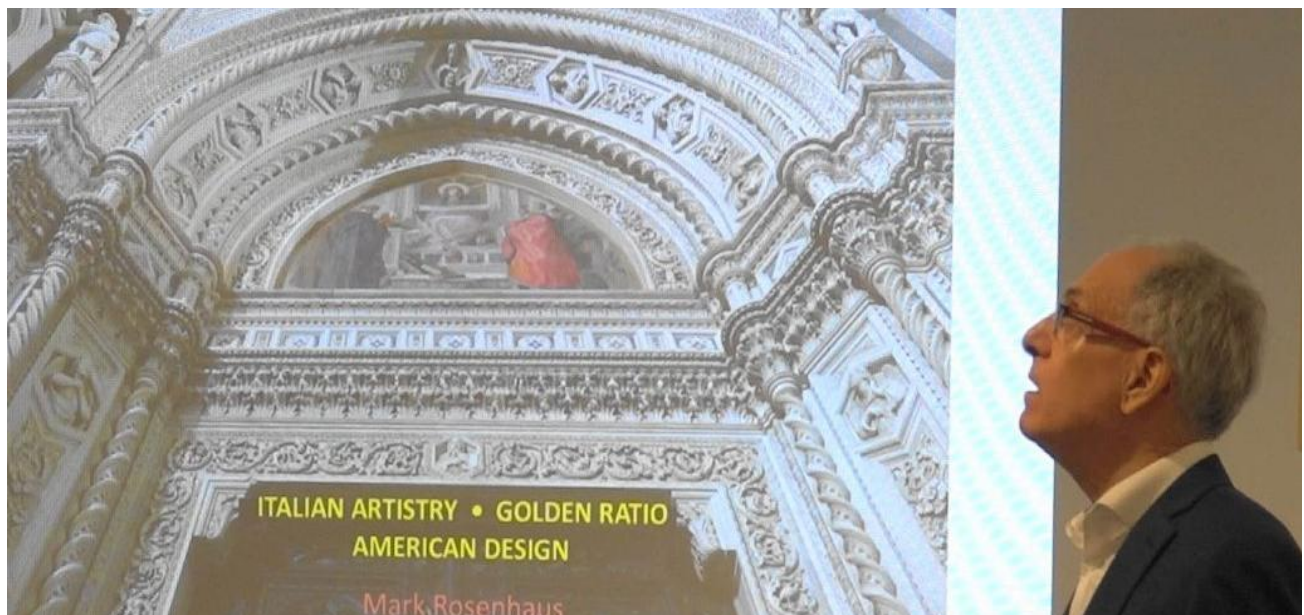


Stairway to the past: With only 10 year-round residents, the ancient hill town of Civita would be inaccessible without the foot bridge that snakes up the mountain. Tourists pay 5 euros to climb it; researchers like Mark go free.

Celebrating Italian design then and now at the Artemest Galleria: IFDA NY president David Santiago, presenter Mark Rosenhaus, Galleria host Bissera Antikaro.



The duomo in Florence is built within a square (black dimensions). The façade features the main blue and two flanking red golden rectangles, each with their width 62% of their height. Different dimensions, albeit the same proportions. The architectural feature to which Filippo Brunelleschi draws your eye is the center rosette. He relied on humans' tendency to follow patterns. The yellow generating lines align with the gables over the small doors, go through the corners of the red golden rectangles, then continue to the top of the center blue golden rectangle. The green lines align with the main door gables with the point they touch the yellow lines tangent to the rosette.



Designer Mark Rosenhaus analyzes the time-tested Golden Ratio formula that distinguishes Italy's famous art and architecture.

Carolinas Chapter

Walking Tour of High Point University Campus

March 1, 2023, Wednesday from 5:30—7:00 pm

IFDA Carolinas Chapter enjoyed a walking tour of the High Point University Campus presented by Dr. Jane Nichols. The tour began at Norton Hall, home to the Interior Design and Fashion Merchandising programs, walked through the Butterfly Café and Caine Conservatory, and then visited the Schools of Health Sciences. The tour continued past the School of Ed., and past Greek Village on our way to Cottrell Hall, where the ASID Award-winning Starbucks designed by Barbour-Spangle is housed.

The tour continued across “water-world” to the Slane Student Center, where the group had dinner. The David Haworth Fine Arts Center and the Chapel, ended the tour.



L to R ; Ellen Geffin, Jane Nichols, Joanne Hoover, Dawn Brinson, FIFDA, International IFDA President, Wilma Hammett, Kathleen Koch



L to R: Dawn Brinson, FIFDA, International IFDA President, Wilma Hammett, Joanne Hoover, Ellen Geffin, Jane Nichols, Joyce Poynton, FIFDA



The effects of a well-supported team will be evident both in your business and community. Are you taking advantage of the resources available to help you provide team support?

Learn more at DesignersHealthcare.com.

Florida Chapter

The Call of the Show House, Kips Bay Style

Submitted by Ida McCausland

What a fun exciting morning IFDA Florida spent touring the 6th Annual Kips Bay Decorator Show House, Palm Beach, Florida.

This marvelous home, located along the Palm Beach inlet was only built in 2007 – not even 20 years old! With over 9,000 square feet, and sitting on 72 waterfront acres, this was a stunning example of Mediterranean style architecture, showcasing an oversized balcony and a covered loggia- which looks out over the serene pool to the Intracoastal Waterway.

The fact that the proceeds benefit the Kips Bay Boys and Girls Clubs of Florida only added to the enjoyment.

After touring, and re-touring the house (there was so much to take in), we enjoyed a scrumptious lunch at a private marina set up by non-other then our own Deborah Gregg. I'd tell you to drop in here but it was really private - we weren't allowed to take any photos or even to provide the name!

We hope that you will join us for our next IFDA Florida event – stay tuned!



Hmmm, asks Marjorie Barnett, how does it work asks confused IFDA visitors Ida McCausland and Deborah Gregg.



"Nice doggie" says Deborah Gregg to the front door guard at the Mansion.



IFDA show house aficionados (aren't we all?) enjoy a fresh breeze from the nearby Intracoastal Waterway. L to R: Ida McCausland, Carla McCausland, Deborah Gregg, Michael Gregg and Marjorie Barnett



Pierre and Tricia Matta, Kyle Tripp, IFDA New England President, Matthew MacCartney, Natalie Volpe, John Nicholas, Larissa Cook, IFDA International-President Elect

New England Chapter The Party

On Feb. 9, the International Furnishings and Design Association (IFDA) hosted Decadent Duo, an intimate event featuring sommelier Matthew MacCartney of Cellarist and the Newport Mansions, Purefections and Boston Jazz Trio for a very sweet treat. THE GUESTS Pierre and Tricia Matta, owners of Newton Kitchens & Design, hosted the evening at their Needham storefront. Tiffany LeBlanc, Modern Luxury Interiors Boston publisher Tess Woods and Larissa Cook enjoyed a three-hour guided tasting of wine and chocolate pairings, including Moscato d'Asti, Elio Perrone and white chocolate elderflower; Lambrusco, La Collina Quaresimo with milk chocolate sea salt; Madeira, Boston Bual, Rare Wine Co. with chocolate pecan; and Port, Kopek, Late Bottled Vintage 2016 with dark chocolate habanero. THE PINNACLE Between sweat bites, guests indulged in charcuterie from American Provisions and pizza cupcakes from 4 Corners Pizza while listening to tunes from Jazz Trio.



Isabelle Yabe, Michela Pearce, Tiffany LeBlanc, Michelle Southworth



Vani Sayeed, Joe Tanguay, Jenna Tredeau and Beezee Honan enjoy the Decadent Duo– wine and chocolate pairings.



Michelle Southworth, Tara Pavia, Alexa Centeno, Natasha Clarke



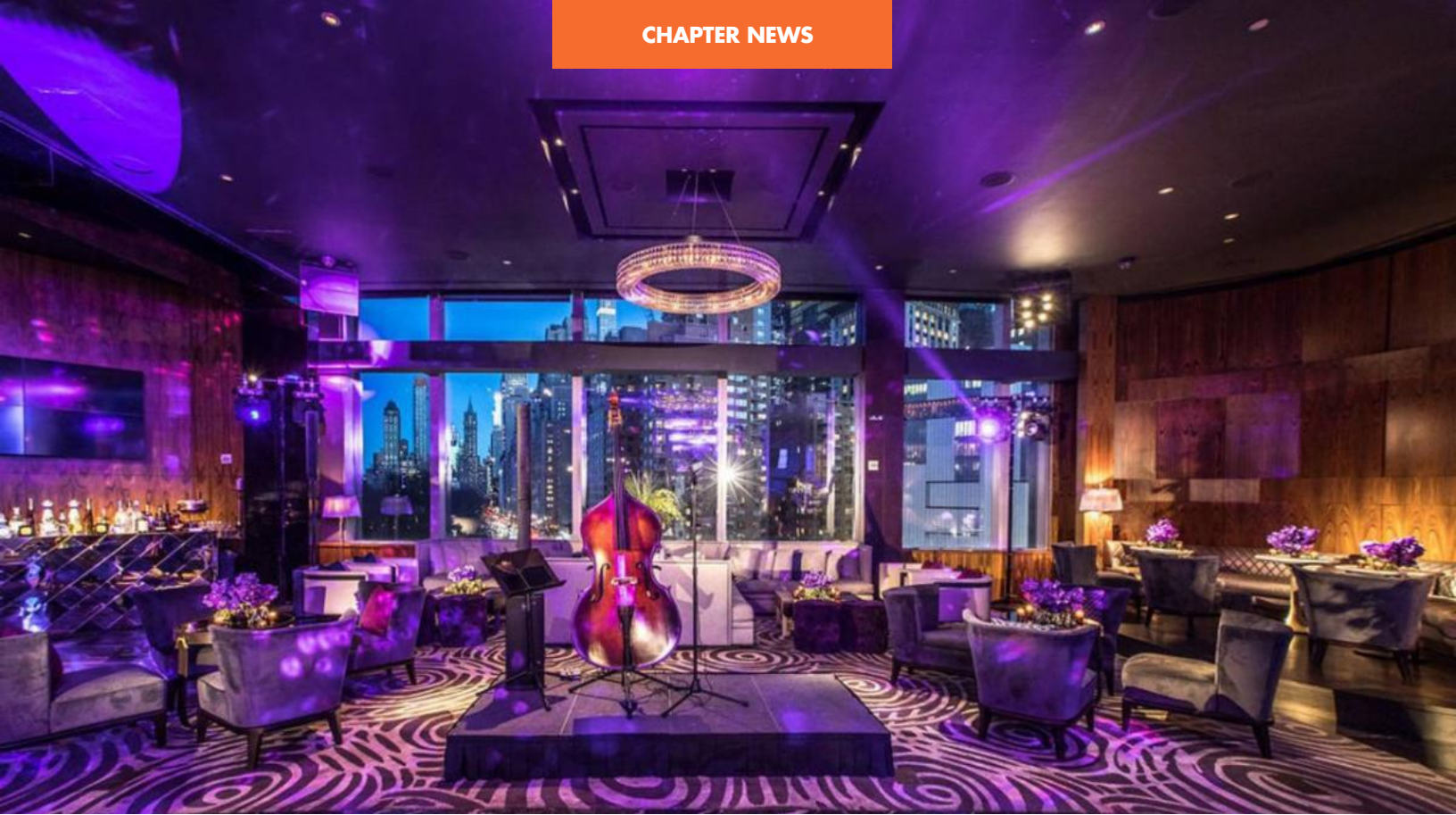
Matthew MacCartney, Cellarist (Sommelier)



Rob Henry, Kevin Cradock, Corey Nuffer, Manny Makkas, Jacqui Becker



Lorelle Carlson, Larissa Cook, John Trifone, Michelle Southworth



Ascent Lounge

New York Chapter Out and About With IFDA NY

Submitted by Maureen Klein

With Covid bans lifted, NY was happy to get back to in-person events but still liked the convenience of Zoom for board meetings and their Monday Meet the Members Town Hall. The first meet-up was with new member Bissera Antikarov, the charming manager of Artemest Galleria, the flagship showroom of the Italian luxury brand that features handcrafted furniture, lighting, decor and more. See artemest.com. Welcome Bissera and thank you for already hosted an event with IFDA member Mark Rosenhaus. Read more about it in this issue— Italian Artistry in American Design.

Our industry's Must Go-To— C-3's, Cocktails, Conversations and Connections, took place in February, March and April. We find that the first Monday of the month work well and after an e-blast invite, we average 20-60 attendees. No fuss to set up since it is a cash bar and our much envied "bar" committee scopes out interesting places where one might not go alone on their own. The word gets out and people feel comfortable knowing they will be get a warm welcome from IFDA greeters and have the chance to network in a stunning setting. It's been a good way to reach potential members too.

We have also added a new branded event series— Members Only +1.

In January we kicked off the year at Oly, OlyStudio.com, a lovely showroom at the NYDC, 200 Lexington Ave. February's Members Only +1 took us to our Silver Partner's Fisher & Paykel (<https://www.fisherpaykel.com/us/>) marvelous appliance showroom in the A&D Building. Patti Carpenter gave us a preview of her S.P.E.N.T talk and in-house Chef Anthony Marzuillo prepared an array of delicious bites and beverages. The March Members Only +1 took us back to the NYDC where host Robert Contini of the Harbinger Showroom helped us explore their multiline to-the-trade collections.

WHEW, it has been a whirlwind first quarter for IFDA NY and the forecast was that it would continue throughout the spring, with more C-3's; a LIGHTING MATTERS event, co-hosted with DLFNY and AKDO; organizing from this side of the world for the first IFDA Japan Fair in NY; Charles Pavarini III guided tour of the Kips Bay Decorator Show House; IFDA Selects at the ICFF and participating in the NYCxDesign Festival activities and more. NY and Japan members experienced a blizzard of activities!



Caitlin Ryan and Chef Anthony Marzuillo were perfect hosts for Fisher & Paykel event.



Speaker Patty Carpenter receives surprise award announcement at the Fisher & Paykel event.



Only at the Artemest event— Never, Ever did I meet another Tessa says IFDA Florida member Tessa Macaulay. Double vision L to R: Maureen Martin, Maureen Klein meet Tessa Stuimer, Tessa Macaulay.



Audience is listening to every word as Mark Rosenhaus explains the Golden Proportion.

Philadelphia Chapter

Holiday Party & IFDA GALA January 19th

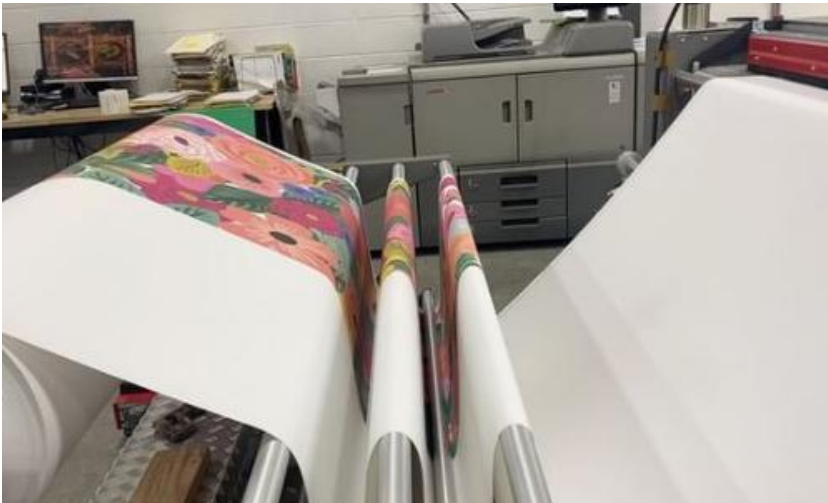
We had a blast at our Holiday Party with much to celebrate including the chapter's 75th anniversary and the IFDA Gala! We had about 40 people consisting of our very own board members, members, and industry partners.

It was such a great time of connection and celebration, and we even were able to honor our longest standing members! Thank you to all that came out and to the many hands that worked behind the scenes tirelessly to pull this all together for a successful event!



Wallquest Factory Tour February 16th

We had the great opportunity to tour the Wallquest Wayne and Wallquest King of Prussia Factories with 20 guests in attendance. We are so grateful to Jacky Quinn for organizing this event for our members. It was definitely a wonderful and unique experience to be a part of!



Stout Textiles: Crafts, Cocktails & Conversations March 9th

A huge thank you to those that organized this wonderful Stout tour, made complete with cocktails and a Q & A session with Victoria Larson and the Stout design team. Our guests were able to tour the Stout warehouse and view screen printings of Victoria Larson's new wallpaper collection. This was definitely an educationally worthwhile experience to bring about some fresh inspiration for upcoming projects!



Richmond Chapter

Kudos to Stephanie Theofanos and Cathy Corbett

Submitted by Princess Roman

R•HOME, a regional Richmond publication featured two of our IFDA members asking them to give their take on the Fall 2022 High Point Market. Featured were designers, Stephanie Theofanos and Cathy Corbett. A few of their observations:

R•Home: What trends were most prominent?

Corbet: Brown is back. I loved the warm wood tones of Hooker Furniture's Charleston collection. There were also more fringe and tassels. Wesley Hall Furniture had a sofa with bullion fringe — I haven't seen that in a while.

Theofanos: I saw lots of upholstered furniture with curves and softer edges, with more texture. And lots more wallpaper— more multicolored, bolder and larger scale. There were also more nature-inspired pieces, like lighting fixtures featuring unique branch designs.

For the complete give and take on what our designers experienced at HP and what they forecast for the 2023 show, read more at [R•HOME online](#).



Kathy Corbett



Stephanie Theofanos

Recently Hosted Trade Show



Mitzi van der Veer, Jenni Kirby (Owner of Crossroads Art Center), Princess Roman (IFDA Board Member RVA), Sheila Johnson (IFDA member)



Diane Williams (IFDA Board Member RVA Chapter), Rachel Parrish (IFDA Board Member RVA Chapter)



Jenni Kirby (Owner of Crossroads Art Center)



Mitzi van der Veer, Princess Roman (IFDA Board Member RVA), Sheila Johnson (IFDA member), Cathy Jordan (IFDA Board Member RVA), Bettina Pamplona (IFDA Board Member RVA)



Horse work in progress.



Educational Foundation

IFDA'S Educational Foundation

Announces Professional Grants For 2023

Applications accepted June 1st to June 30th, 2023

Submitted by Sarah Fletcher

Applications will be accepted between June 1 and June 30, 2023, for five professional grants from the Educational Foundation (EF) of IFDA. Since 1968, our 76-year-old global design industry alliance has awarded grants to talented professionals as well as scholarships to high-achieving design students, internationally. Last year, the funds awarded for scholarships and grants totaled \$27,000.

"These professional grants are a great opportunity for industry professionals to expand horizons, enhance their skills and education and even jump-start their careers," said Karen

Dzendolet, IFDA, Chairman of the Board of the Educational Foundation of IFDA. "Don't let the opportunity go to waste, apply if you are interested.."

IFDA Educational Foundation Grants are offered to professionals working in the interior design or furnishings related fields, as well as design educators and design programs, not to undergraduate students. Winners will be notified by August 31 or as noted for that grant. The website has detailed information and applications: ifdaef.org.

The six grants, to be applied for starting June 1, 2023, are as follows:

Irma Dobkin Universal Design Grant— \$3,000

Open to an individual involved in a Universal Design project to meet living needs of all ages and capabilities.

Ina Mae Kaplan Historic Preservation Grant — \$2,000

Open to those involved in restoring or preserving historic sites related to design/furnishings.

Elizabeth Brown Grant to Interior Design Programs — \$2,500

Open to an accredited U.S. interior design program, for supplementary materials/resources.

Tony Torrice Professional Development Grant — \$1,500

Open to professionals in design/furnishings seeking to enhance skills with advanced study.

Valerie Moran Memorial Grant — up to \$3,000

Awarded to an IFDA professional member interested in expanding their horizons through travel, trade shows and professional development studies.

IFDA EF 2022 Professional Grant Winners



Dr. Saman Jamshidi



Dr. Christine Wacta



Luke Kwan



Beth Miller, PhD



Kayne Wilk

Barbara Brock Memorial Grant – \$1500

Funds will go towards travel expenses for two IFDA experts to speak at various industry venues.

Grants Available for IFDA Chapters - can be applied for throughout the year, at least 30 days prior to the event:

Chapter Partnership Grants — \$1,000 Each, \$3,000 Total

Three grants available to IFDA chapters for educational programs (accepted a minimum of 30 days prior to event). Given our changed circumstances due to COVID-19 this grant program will support educational event programming provided as an online webinar where there are expenses; in addition, these online programs should be promoted beyond the local chapter receiving the grant funding; that is, promoted to and made available for all IFDA members.

Claire Coleman Founders Grants — \$1,000 Each, \$2,000 Total

To help IFDA chapters develop marketing and communications programs, events or projects.

Two grants available to IFDA chapters for marketing or communications programs (accepted a minimum of 30 days prior to event). Given our changed circumstances due to COVID-19 this grant program will support marketing or communications event programming provided as an online webinar where there are expenses; in addition, these online programs should be promoted beyond the local chapter receiving the grant funding; that is, promoted to and made available for all IFDA members.

New Chapter Development Grant — \$1,000

To aid newly formed chapters in creating an educational program to attract membership.

For specific information about the grants, visit ifdaef.org or email Earline Feldman, Director of Scholarships & Grants, ef.ifda@tapestries.org.



Mental Wellbeing is Trending

Over the past few years there has been a new understanding and importance placed upon employee mental health and wellbeing. This trend will not be changing anytime soon; and you may be wondering how you can join this new wave of employers promoting employee health and wellness.

Here are a few simple trends that you can take part in:

- Create safe and welcoming break rooms
- Encourage mental health days
- Provide affordable healthcare and Telemental Health services
- Implement team building activities and exercises

These simple steps are just small number of many you can try implementing into your company culture and practices. Try them, you may even be surprised to see a ripple effect in other areas of your company and community.

Your member benefits may be able to help in offering this extra support to your team from affordable healthcare to free telehealth services. Get in touch with a trusted advisor to learn more about the options available to you.



All members of the International Furnishings and Design Association are members of the Educational Foundation. IFDA-EF is the philanthropic arm of the Association. IFDA-EF offer grants to our members to help them expand their knowledge and strengthen their careers. The student scholarships assist those that are studying to be future leaders in our industries. IFDA-EF's funding comes primarily from Chapter donations but more is needed. When you are planning your end of year charity donations, please keep the IFDA Educational Foundation in mind. As members of IFDA, we feel strongly about our industries and our Association. We should support the IFDA Educational Foundation with the same zest.

IFDA Educational Foundation is a non-profit, tax exempt, 501(c)(3) organization. Its nine scholarships support both full and part-time undergraduate and graduate students in the areas of interior, green/sustainable, product and textile design. In addition, 13 grants support professional development opportunities for IFDA members and other design industry professionals, as well as needed resources for design schools.

Visit [instagram.com/ifdaef/](https://www.instagram.com/ifdaef/) and [facebook.com/ifda.educational.foundation/](https://www.facebook.com/ifda.educational.foundation/)

MEMBERSHIP UPDATES

IFDA Welcomes Our 135 New Members Since January

ARIZONA

PROFESSIONAL

Miranda Gwilliam

Rug Worx

Mesa, AZ

Jen Tibbitts

Thirteen and Crowne

Mesa, AZ

Randy Wolfe

Wolfe Woodworking Inc.

Chandler, AZ

CAROLINAS

PROFESSIONAL

Ana Cristina Clark

Ana Cristina Interiors, LLC

Mt. Pleasant, SC

Alexa Keaney

Theodore Alexander

High Point, NC

Victoria Valentinas

VLV Designs

Charlotte, NC

ASSOCIATE

Victoria Mayorga

Student/Casa Santi

Asheboro, NC

FLORIDA

PROFESSIONAL

Isabel Sakiewicz

DBI Studio LLC

Tampa, FL

JAPAN

PROFESSIONAL

Shinobu Kishimoto

Ashiya, JP

Goujin Nomura

Tanbasayama, JP

Sumiko Tanaka

English School & Tea Gallery

Osaka, JP

NEW ENGLAND

PROFESSIONAL

Meg Bennett

Megumi Interiors

Andover, MA

Catherine Bertulli

Catherine Bertulli Carpets

Melrose, MA

Nick Buni

Adams & Beasley Associates

Carlisle, MA

Liz Cahill

ART Architects

Boston, MA

Marc Calheta

Kistler & Knapp Builders

Acton, MA

Graeme Chlohesey

Big Dog Painting LLC

Woburn, MA

Mike Cole

Hydroshield Boston

Natick, MA

Sue Corr

Waterworks

Boston, MA

Kevin Cradock

Kevin Cradock Builders

Boston, MA

Liz Daly

Liz Daly Photography

Biddleford, ME

Tim Davis

Marvin At 7 Tide

Boston, MA

Priscilla De Lima

Divine Stoneworks

Ashland, MA

Ana Donohue

Ana Donohue Interiors

Melrose, MA

Christina Fichera

Colonial Marble Company Inc.

Everett, MA

Robin Gannon

Robin Gannon Interiors

Lexington, MA

Shannon Gilmour

Grace Interiors

Boston, MA

Julia Hale

J Hale Design Studio

Yarmouth, ME

Ian Kaplan

Boston Design Guide

Sudbury, MA

Jason Keefe

Millennium Marble & Granite, LLC

Wrentham, MA

Brigitte Lamarche

Boston Intelligence Group, Inc.

West Newton, MA

Kate Maloney Albani

Kate Maloney Interior Design

Winchester, MA

Patricia Matta

Newton Kitchens & Design

Needham, MA

Liza McAndrews

Systems Design & Integration, Inc.

Needham, MA

Caitlin McLaughlin

Dane Austing Design

Boston, MA

Michael Oneil

Artistic Tile & Design Inc

Wayland, MA

Nicholas Paolucci

Mass Architect LLC

Milton, MA

Kristin Paton

Kristin Paton Interiors

Boston, MA

Michela Pearce

LeBlanc Design

Boston, MA

Suzanne Petri

Strateres

Norwood, MA

Ryan Pinnock

WinSupply Middletown CT Co.

Middletown, CT

Jeff Pomeroy

Light Room

Charlestown, MA

Jacqueline Richie

Mitchell Gold & Bob Williams

Boston, MA

Vivian Robins

Vivian Robins Design

Westford, MA

Audrey Sampson

Audrey Interiors LLC

Harvard, MA

Edward Stack
DiFoggio Electric, Inc.
Waltham, MA

Elizabeth Than Soe
Designs By Elo
Westwood, MA

Linda Weisberg
LW Interiors
Waban, MA

Judith Whalen
The Design Studio
Hull, MA

Isabelle Yabe
LeBlanc Design
Boston, MA

Educator
Seunghae Lee
Western Institute of Technology
Boston, MA

Stephanie McGoldrick
UMass Dartmouth
North Dartmouth, MA

Lynette Panarelli
Wentworth Institute of Technology
Boston, MA

Associate

Tiara Castro
Sherwin Williams
Canton, MA

Tess Woods
Modern Luxury Interiors Boston
Boston, MA

NEW YORK PROFESSIONAL

David Adler
Adler Law Group
New York, NY

Bissera Antikarov
ARTEMEST
New York, NY

Catherine Brophy
Catherine Brophy Interior Design
Brooklyn, NY

Bryan Campo
Thom Filicia Inc.
New York, NY

Cathy Chevin
Carte Blanche Designs
Glen Head, NY

Ryan Cirkus
Thom Filicia Inc.
New York, NY

Janice Ferro
Janice Ferro Deisgns
New York, NY

Alick Johnson
Alluel
Brooklyn, NY

Joyce Malave
Bakes and Kropp Fine Cabinetry
New York, NY

Tom Mirabile
Springboard Futures
Brooklyn, NY

James Neisloss
Meadowood Properties
Plainview, NY

Nichole Peris
Cosentino
White Plains, NY

Ruth Tane
Ruthie Tane
Brooklyn, NY

RETIRED

Honey Mannix
Honey Mannix Interior Design
New York, NY

STUDENT

Nazia Ansari
UC Berkley Extension
Latham, NY

PHILADELPHIA PROFESSIONAL

Jaime Aitkens
Cambria
King of Prussia, PA

Gary Altoonian
Altoonian Photography
West Chester, PA

Corinna Blair
Interiors By Corinna
Doylestown, PA

Gretchen Bond
Woodsworth 14 LLC
Newtown Square, PA

Ali Brooks
Hajoca Plumbing
King of Prussia, PA

Mary Cardinale
Bucks County Wondow Decor
Richboro, PA

Christina Cave
Sherwin Williams
King of Prussia, PA

George Chianese
George Renders LLC
Philadelphia, PA

Adele Faust
Bright Light Design Center
Millville, NJ

Linda Gerhard
Gerhard's Appliances
Glenside, PA

Kristen Kilkenny-Swager
Kilkenny Collections, LLC
Wayne, PA

Kimberly Kristire
Fabricut, Inc
Flourtown, PA

Jeremy McCarthy
Stone House 1904
Cleveland, PA

Tristan McLean
Bravas Philadelphia LLC
Cherry Hill, NJ

Chad Mitchell
Mitchell Outpost
Baltimore, MD

Kelly Monk
BG Magic dba Kellijane
Philadelphia, PA

Jill Myers
Jill Myers Interiors
Downingtown, PA

Kathleen Patton
Kathleen Patton Design
Washington Crossing, PA

Samantha Pratt
Samantha Ashley Designs LLC
Glenmoore, PA

Kai Progulske
Sub-Zero Group Mid-Atlantic
Philadelphia, PA

Alexis Siriani
Coatesville VAMC
Coatesville, PA

Jamie Vogt
Stark Carpet
Philadelphia, PA

Marie Weaverling
Marie Weaverling Design
West Chester, PA

EDUCATOR

Jennifer Jarden
Harcum College
Bryn Mawr, PA

ASSOCIATE

Kelsey Lynn
Bright Light Design Center
Whitehall, PA

Victoria Martin
VLM Artist Designs
Doylestown, PA

RICHMOND PROFESSIONAL

Kimberly Bostain
Worthen Furniture
Richmond, VA

Jamie Coffey
Xoj.llc
Richmond, VA

Jill Erwin
Jill Erwin Interiors LLC
Midlothian, VA

Jenny Foley

Palette Home
Richmond, VA

Robin Gahan

Marble Moon Interiors
Richmond, VA

Lisa Hall

Hallmark Receiving
Henrico, VA

Stevie McFadden

Toepke Interiors LLC
D/B/A Flourish Spaces
Richmond, VA

Lisa Melara

Melara Interiors
Richmond, VA

Amanda Schudder

Sprucely Home & Lifestyle Solutions
Richmond, VA

Andrew Stark

Ethan Allen
Richmond, VA

Leah Walder

Leah Walder Interiors
Richmond, VA

Ann Wisniewski

AJW Designs, Inc.
Mineral, VA

ASSOCIATE

Susan Eliades
Posh Interiors, LLC
Hopewell, VA

STUDENT**Alea Bryar**

University of Richmond
Fredericksburg, VA

Kelsey Carter Harris

University of Richmond
Richmond, VA

Davina Darden

Lhoa By Design
Richmond, VA

Lynne Demestre

Harmony & Hue Designs LLC
Richmond, VA

Sharis Futrell

University of Richmond
Chesterfield, VA

Belinda Go

Go Home Styling
Henrico, VA

Hollis Hall

University of Richmond
Fredericksburg, VA

Shelia Johnson

SJ Design Interiors
North Chesterfield, VA

Amy Lutero

University of Richmond
Richmond, VA

Kelli Mallinger

Young Interiors
Powhatan, VA

Kimberly Meyers

University of Richmond
Midlothian, VA

Sharon Montgomery

DesignMatters
Richmond, VA

Laura Pegram

Woodfin Heating Inc.
Henrico, VA

Angela Reed-Winston

Angela Reed-Winston
N. Chesterfield, VA

Viviane Rockenbach

University of Richmond
Glen Falls, VA

Princess Roman

Melchor
Henrico, VA

Michelle Smith

Skirts & Pumps It's a Mentality
Richmond, VA

Allison Solomson

Reflected Interiors
Richmond, VA

Sarah Wallace

Priority Design & Staging
Stafford, VA

Melissa Walters

University of Richmond
North Chesterfield, VA

Melissa Walton

Collected Impressions
Henrico, VA

WASHINGTON, DC PROFESSIONAL

Elizabeth Stajka

Elizabeth St. John Atelier
Silver Spring, MD

Carlos Ventura

All Trade Construction Group Inc.
Dumfries, VA

ASSOCIATE**Jack Roberts**

Waterworks
Washington, DC

STUDENT**Nancy Nolet**

Community College
of Baltimore County
Phoenix, MD

Sarah Weiskind

Anne Arundel Community College
Baltimore, MD

IFDA Calendar of Upcoming Market Events

June 21 - 27, 2023

Dallas Total Home & Gift
Market
Dallas Market Center
Dallas, TX

July 16 - 22, 2023

Atlanta Market
AmericasMart
Atlanta, GA

July 30 - August 3, 2023

Las Vegas Market
World Market Center Las
Vegas
Las Vegas, NV

2023 Committees

By-Law Committee

Susan Hirsh, FIFDA Chair
Iida McCausland

Finance Committee

Larissa Cook
Janet Stevenson, FIFDA
Dave Gilbert, FIFDA
Dawn Brinson, FIFDA
Kyle Tripp

**Industry Partnership
Committee**

Linda Kulla, FIFDA
Janet Stevenson, FIFDA

Network Committee

Grace McNamara, Chair
Maureen Klein